

Specifications

Model	SX-180	
Measurements	Metric	US
Working height maximum*	56.86 m	186 ft
Platform height maximum	54.86 m	180 ft
Horizontal reach maximum	24.38 m	80 ft
Below ground reach	0.61 m	2 ft
A Platform length	2.44 m	8 ft
B Platform width	0.91 m	3 ft
C Height - stowed	3.05 m	10 ft
D Length - stowed	14.33 m	47 ft
Length - transport (jib tucked under)	12.98 m	42 ft 7 in
E Width - axles retracted	2.49 m	8 ft 2 in
Width - axles extended	5.03 m	16 ft 6 in
F Wheelbase - axles retracted	5.03 m	16 ft 6 in
Wheelbase - axles extended	4.72 m	15 ft 6 in
G Ground clearance - center	0.38 m	1 ft 3 in

Productivity

Lift capacity	350 kg	750 lbs
Platform rotation	160°	160°
Vertical jib rotation	135°	135°
Horizontal jib rotation	180°	180°
Turntable rotation	360° continuous	
Turntable tailswing - axle retracted	1.4 m	3 ft 9 in
Turntable tailswing - axle extended	1.36 m	3 ft 6 in
Drive speed - stowed	4.02 km/h	2.5 mph
Drive speed - out of stowed		
below 38.10 m (125 ft)	0.65 km/h	0.4 mph
above 38.10 m (125 ft)	0.17 km/h	0.1 mph
Gradeability - stowed**	35%	35%
Turning radius - axles retracted: inside	6.28 m	20 ft 7 in
outside	8.56 m	28 ft 1 in
Turning radius - axles extended: inside	3.02 m	9 ft 11 in
outside	7.34 m	24 ft 1 in
Control system	12 V DC proportional	
Tyres	445/65D 22.5 18 ply foam-filled	

Power

Power source	Deutz Diesel TD 2011 L04i 4-cylinder turbo diesel, 74hp (55kW) Perkins Diesel 1104D-44T 4 cylinder turbo diesel, 74 hp (55 kW)	
Auxiliary power unit	12 V DC	12 V DC
Hydraulic tank capacity	246.1 L	110 gal
Fuel tank capacity	189.3 L	50 gal

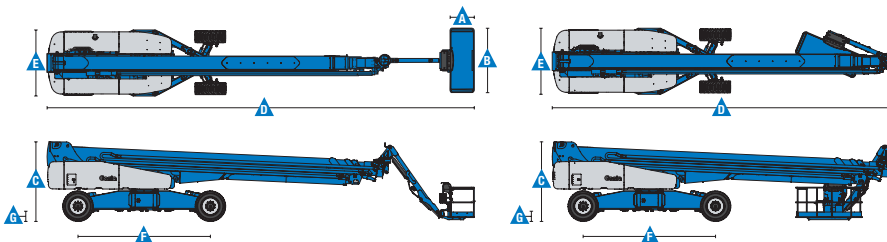
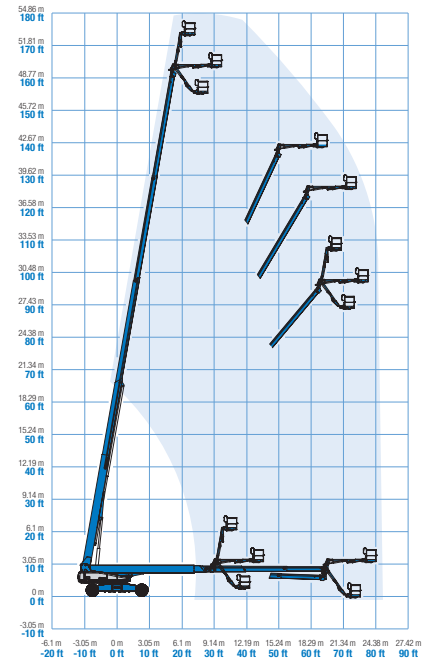
Weight***

4WD	24,494 kg	54,000 lbs
-----	-----------	------------

Standards Compliance

EU Directives: 2006/42/EC - Machinery Directive
Harmonized Standards: EN280:2001+A2:2009;
2004/108/EC (EMC); 2000/14/EC (Outdoor Noise)

Range Of Motion SX-180



* The metric equivalent of working height adds 2 m to platform height. U.S. adds 6 ft to platform height.

** Gradeability applies to driving on slopes. See operator's manual for details regarding slope ratings.

*** Weight will vary depending on options and/or country standards.

Features

Standard Features	Easily Configured To Meet Your Needs	Options & Accessories
-------------------	--------------------------------------	-----------------------

Productivity

- Self-levelling platform
- 160° Hydraulic platform rotation
- 3.05 m (10 ft) rotating jib
- Fully proportional Hall effect joystick controls
- Hydraulic oil cooler
- Thumb rocker steering
- Driveable at full height
- Drive enable system
- AC power to platform
- Horn
- Hour meter
- Tilt alarm
- Descent alarm
- Alarm package
- 360° continuous turntable rotation
- Positive traction drive
- Two speed wheel motors
- Ground control box cover
- Engine status display
- Entry toe boards
- Certified load sensor

Power

- All engines are emissions compliant
- 7.5 kW generator
 - 415V/240V/50Hz (Europe)
 - 110V/55V/50Hz (UK)
- 12 V DC auxiliary power
- Anti-restart engine protection
- Auto engine fault shutdown
- Engine Monitor Display

Platform Options

- Steel 2.44 m (8 ft) (standard)
- Steel 2.44 (8 ft) tri-entry

Engine Options

- Deutz turbo diesel 55 kW (74 hp)
- Perkins turbo diesel 55 kW (74 hp)

Drive/Steer

- 4 x 4 (standard)
- 4 wheel steer (standard)

Axle

- Extendable axles (standard)

Tyres

- Rough terrain foam-filled (standard)



Productivity Options

- Half mesh platform inserts with swing gate ⁽¹⁾
- Platform top auxiliary rail
- Hostile environment package ⁽²⁾
- Tool tray
- Work lights package (2 on chassis, 2 on platform)
- Biodegradable Hydraulic Oil ⁽²⁾
- Airline to Platform ⁽²⁾
- Anemometer
- Platform control box cover
- Lockable platform control box cover

Power Options

- AC generator packages (120V/50Hz with dual sockets in platform - 240-415V/50Hz 3 phase with 5 pole 3 phase socket and 240V socket - Both generators are 7,5 kW)
- Cold Weather Packages
- Diesel scrubber/spark arrestor muffler (catalytic muffler)
- Intake air pre-cleaner ⁽²⁾

⁽¹⁾ Not available on tri-entry platforms

⁽²⁾ Factory-fit option only

Working At Height Limited

(Southern Office)
Amberley Court
Old Elstead Road
Milford
Surrey
GU8 5EB

Tel: 01483 415 410
Fax: 01483 417 719

Working At Height Limited

(Northern Office)
The Portergate
Ecclesall Road
Sheffield
South Yorkshire
S11 8NX

Tel: 0114 209 6206
Fax: 0114 209 6001

Suppliers of:

Powered Access Platforms
Aerial Work Platforms
Runabout Access Platforms
Scissor Lifts
Articulating Boom Access Platforms
Telescopic Boom Access Platforms
Material Lifts
Telehandlers
MEWPS Training