

# EXCELLENT POSITIONING MEETS SUPERIOR HANDLING

Genie® engine-powered articulating Z™-booms provide lifting versatility with a stunning combination of up, out and over positioning capabilities and extensive outreach. They also offer high ground clearance, two- or four-wheel drive options and rough terrain features for easy travel over irregular ground. Ideal for outdoor construction and industrial applications, these units have working heights between 40 ft 6 in (12.52 m) and 66 ft 4 in (20.39 m) and reach out a maximum of 22 ft 3 in (6.78 m) to 36 ft 3 in (11.05 m).



## JOB SITE ACCESS

The Z™-boom design provides lifting versatility with “up and over” positioning and excellent outreach. A tight turning radius and zero tailswing allow unmatched maneuverability in confined work areas.

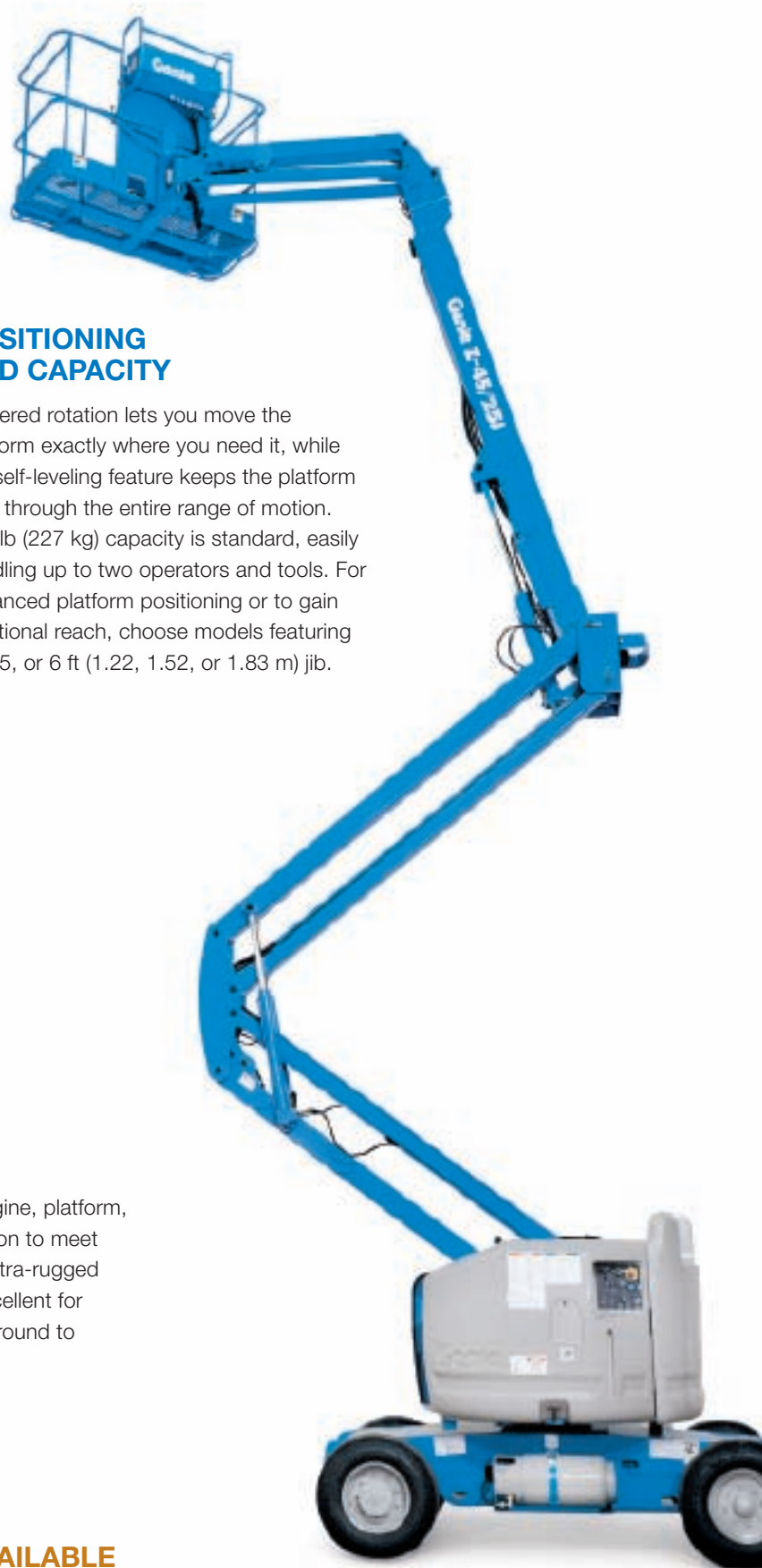


## PERFORMANCE AND TERRAINABILITY

Get the job done faster and more efficiently with a powerful combination of speed and gradeability. Genie’s full-time positive drive traction system and active oscillating axle work together based on ground conditions to help keep the machine moving without losing traction on rough terrain (oscillating axle optional on some models. Not available on Z™-34/22 IC).



**Genie was the first in the industry to introduce the rotating jib.**



### POSITIONING AND CAPACITY

Powered rotation lets you move the platform exactly where you need it, while the self-leveling feature keeps the platform level through the entire range of motion. 500 lb (227 kg) capacity is standard, easily handling up to two operators and tools. For enhanced platform positioning or to gain additional reach, choose models featuring a 4, 5, or 6 ft (1.22, 1.52, or 1.83 m) jib.

### CHOICE AND VERSATILITY

Choose from two- and four-wheel drive, engine, platform, axle and tire options for the best configuration to meet your specific job site requirements. Need extra-rugged performance? Rough terrain models are excellent for traveling (stowed) over irregular or bumpy ground to a worksite.

### ROUGH TERRAIN MODELS AVAILABLE

Z™-34/22 IC

Z™-45/25 IC  
NARROW

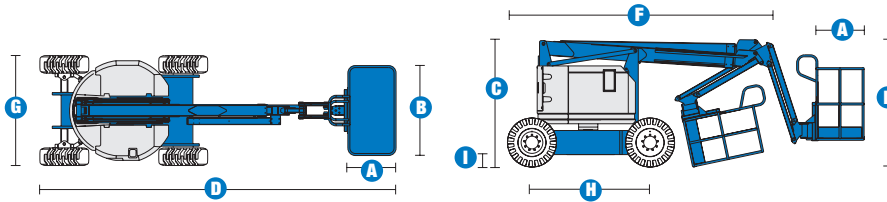
Z™-45/25J IC  
NARROW

Z™-45/25 RT

Z™-45/25J RT

Z™-60/34

# Specifications



MODELS	Z™-34/22 IC 2WD		Z™-34/22 IC 4WD	
	US	Metric	US	Metric
Working height maximum*	40 ft 6 in	12.52 m	40 ft 10 in	12.62 m
Platform height maximum	34 ft 6 in	10.52 m	34 ft 10 in	10.62 m
Horizontal reach maximum	22 ft 3 in	6.78 m	22 ft 3 in	6.78 m
Up and over clearance maximum	14 ft 11 in	4.55 m	15 ft	4.57 m
<b>A</b> Platform length	2 ft 6 in	.76 m	2 ft 6 in	.76 m
<b>B</b> Platform width	4 ft 8 in	1.42 m	4 ft 8 in	1.42 m
<b>C</b> Height - stowed	6 ft 7 in	2.00 m	6 ft 9 in	2.06 m
<b>D</b> Length - stowed	18 ft 6 in	5.64 m	18 ft 7 in	5.66 m
<b>E</b> Storage height	7 ft 5 in	2.26 m	7 ft 6 in	2.26 m
<b>F</b> Storage length	13 ft 5 in	4.11 m	13 ft 6 in	4.11 m
<b>G</b> Width	5 ft 8 in	1.73 m	6 ft 1 in	1.85 m
<b>H</b> Wheelbase	6 ft 2 in	1.88 m	6 ft 2 in	1.88 m
<b>I</b> Ground clearance - center	6 in	.15 m	6.5 in	.17 m

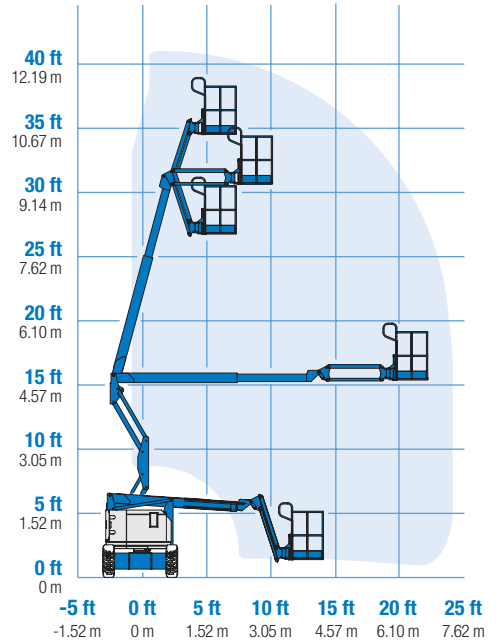
PRODUCTIVITY				
Lift capacity	500 lbs	227 kg	500 lbs	227 kg
Platform rotation	180°		180°	
Vertical jib rotation	139°		139°	
Turntable rotation	355° non-continuous		355° non-continuous	
Turntable tailswing	zero		zero	
Drive speed - stowed	3.0 mph	4.8 km/h	3.0 mph	4.8 km/h
Drive speed - raised**	0.68 mph	1.1 km/h	0.68 mph	1.1 km/h
Gradeability - stowed***	37%		45%	
Turning radius - inside	5 ft 9 in	1.75 m	5 ft 11 in	1.80 m
Turning radius - outside	13 ft 1 in	3.98 m	13 ft 6 in	4.11 m
Controls	12V DC proportional		12V DC proportional	
Tires - air-filled	9 x 14.5 in		10 x 16.5 in	rough terrain

POWER				
Power source	Kubota DF-972 3-cylinder gas/LPG 32 hp (24 kW) Kubota D-1105 3-cylinder diesel 25 hp (18 kW) Perkins 403 D11 3-cylinder diesel 26 hp (19.5 kW))			
Auxiliary power unit	12V DC		12V DC	
Hydraulic tank capacity	19 gal	71.9 L	19 gal	71.9 L
Fuel tank capacity	9.0 gal	34.1 L	9.0 gal	34.1 L

WEIGHT****				
	10,150 lbs	4,604 kg	10,450 lbs	4,740 kg

STANDARDS COMPLIANCE	
	ANSI A92.5, CSA B354.4, CE Compliance, AS 1418.10

## RANGE OF MOTION Z™-34/22 IC



\*The metric equivalent of working height adds 2 m to platform height. U.S. adds 6 ft to platform height.  
\*\*In lift mode (platform raised), the machine is designed to operate on firm, level surfaces only.  
\*\*\*Gradeability applies to driving on slopes. See operator's manual for details regarding slope ratings.  
\*\*\*\*Weight will vary depending on options and/or country standards.

## Features

### EASILY CONFIGURED TO MEET YOUR NEEDS

#### PLATFORM OPTIONS

- Steel 4 ft 8 in (1.42 m) (standard)
- Steel 3 ft 10 in (1.17 m)

#### JIB

- 4 ft (1.22 m) jib boom

#### POWER OPTIONS

- Kubota DF-972 3-cylinder gas/LPG 32 hp (24 kW)
- Kubota D-1105 3-cylinder diesel 25 hp (18 kW)
- Perkins 403 D11 3-cylinder diesel 26 hp (19.5 kW)

#### DRIVE OPTIONS

- 2WD
- 4WD

#### TIRE OPTIONS

- Industrial air-filled (standard 2WD)
- Rough terrain air-filled (standard 4WD)
- Industrial foam-filled
- Industrial non-marking air or foam-filled
- Rough terrain foam-filled
- High flotation air-filled
- Sealant treated air-filled

### STANDARD FEATURES

#### MEASUREMENTS

##### Z™-34/22 IC 2WD

- 40 ft 6 in (12.52 m) working height
- 22 ft 3 in (6.78 m) horizontal reach
- 14 ft 11 in (4.54 m) up and over clearance
- Up to 500 lb (227 kg) lift capacity

##### Z™-34/22 IC 4WD

- 40 ft 10 in (12.62 m) working height
- 22 ft 3 in (6.78 m) horizontal reach
- 15 ft (4.57 m) up and over clearance
- Up to 500 lb (227 kg) lift capacity

#### PRODUCTIVITY

- 4 ft (1.22 m) jib with 139° working range
- Self-leveling platform
- Hydraulic platform rotation
- Fully proportional controls
- Drive enable
- AC power cord to platform
- Horn
- Hour meter
- Tilt alarm
- Descent alarm
- 355° non-continuous turntable rotation
- Locking turntable covers
- Zero tailswing and front arm swing
- Two speed wheel motors

#### POWER

- All engines are emissions compliant
- 12V DC auxiliary power



### OPTIONS & ACCESSORIES

#### PRODUCTIVITY

- Platform swing gate
- Half-mesh platform inserts with swing gate
- Air line to platform
- Fire resistant hydraulic oil
- Biodegradable hydraulic oil
- Basic hostile environment kit
- Deluxe aircraft protection package
- Tool tray
- Fluorescent tube caddy
- Pipe cradle (pair)
- Alarm package
- Platform work lights
- Lockable platform control box cover
- Front driving lights

#### POWER

- Engine gauge package
- AC Generator Packages (110V/60Hz, 3000 W or 220V/50Hz, 2500 W)
- Cold Weather Package
- LPG tank 33.5 lb (15.19 kg) capacity
- Retained key selector switch

#### Working At Height Limited

(Southern Office)  
Amberley Court  
Old Elstead Road  
Milford  
Surrey  
GU8 5EB

Tel: 01483 415 410  
Fax: 01483 417 719

#### Working At Height Limited

(Northern Office)  
The Portergate  
Ecclesall Road  
Sheffield  
South Yorkshire  
S11 8NX

Tel: 0114 209 6206  
Fax: 0114 209 6001

#### Suppliers of:

Powered Access Platforms  
Aerial Work Platforms  
Runabout Access Platforms  
Scissor Lifts  
Articulating Boom Access Platforms  
Telescopic Boom Access Platforms  
Material Lifts  
Telehandlers  
MEWPS Training