



AH46 DB AH51 DB ARTICULATING BOOMS

The A-SERIES boom lifts are available in two configurations featuring the 46DB and 51DB models. Both models boast an industry leading, standard equipped, 360 degree continuous turret rotation. Zero tail swing compliments the turret design allowing for flexible operation in tight locations.

Superior positive traction and terrainability is provided by the axle based 4WD, which accounts for a proven low maintenance, rugged and reliable drive train. The A-SERIES are equipped with a rear axle hydraulic differential lock/unlock switch allowing the operator to lock the rear differential when negotiating rough terrain. The unlocked position improves turning radius and reduces tire marks on hard surfaces.

Other key features include; direction sensing drive and steer controls, true vertical rise with riser function which prevents drifting forward or backwards, analog based controls and standard colour coded and numbered wiring system.



WORKINGATHEIGHT

ARTICULATING BOOM LIFTS

SPECIFICATIONS

AH46 DB

AH51 DB

2006/42/CE

Work Height	16.15 m	17.58 m
Platform Height	14.15 m	15.58 m
Horizontal Reach	7.68 m	9.16 m
Up and Over Height	7.63 m	7.63 m
Platform Size	1.83 x 0.76 m	1.83 x 0.76 m
Stowed Width	2.24 m	2.24 m
Tailswing	Zero	Zero
Stowed Height	2.07 m	2.07 m
Stowed Length	6.50 m	7.25 m
Wheelbase	2.03 m	2.03 m
Ground Clearance	0.40 m	0.40 m
Rotation	360°	360°
Platform Rotation	180°	180°
Jib Length	1.42 m	1.42 m
Jib Range +/-	+70° / -75°	+70° / -75°
Weight	6981 kg	7316 kg
Gradeability	45%	45%
Turning Radius (Inside)	2.48 m	2.48 m
Turning Radius (Outside)	5.1 m	5.15 m
Axle Oscillation	0.20 m	0.20 m
Drive Speed (High speed)	7.7 km/h	7.7 km/h
Capacity	227 kg	227 kg
Local Floor Load (With Rated Load)	827 kPa	917 kPa
Overall Floor Load (With Rated Load)	10.9 kPa	11.4 kPa
Maximum # of Persons	2	2
Tyre Type	Grip lug foam-filled	Grip lug foam-filled
Diesel Engine	48 HP	48 HP
Fuel Tank Capacity	64 L	64 L
Hydraulic Reservoir	91 L	91 L

STANDARD FEATURES

- Axle based 4WD system
- Operator controlled locking rear differential and limited slip front differential
- Oscillating axle
- Drivable at full height
- 360° continuous turret rotation
- 45% Gradeability
- 48 HP Deutz diesel engine
- Swing out engine tray
- Swing up cowlings
- Modular platform railing system
- Wiring for outlet on platform
- Direction sensing drive and steer controls
- Proportional controls
- Relay based control system
- Colour coded and numbered wiring
- Hourmeter
- Overload sensing system
- Operator horn
- Spring hinged gate
- Lanyard attachment points
- Tie down/lifting lugs
- Wet disc SAHR brakes (rear axle)
- Grip lug foam-filled tyres

OPTIONS*

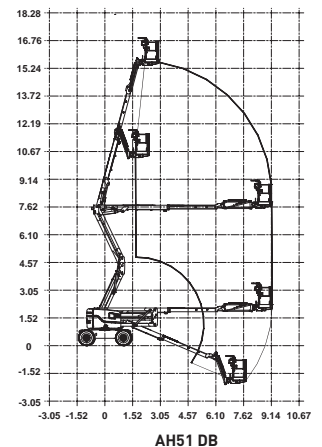
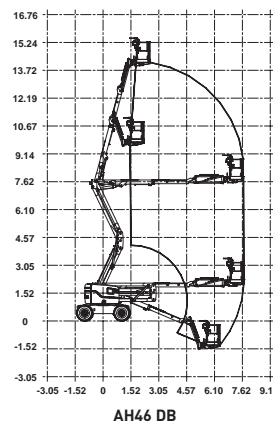
- 0,76 x 1,52 m Platform
- Airline to platform
- 3.5 kW generator (Includes hydraulic oil cooler)
- Cold weather start kit
- Diesel scrubber
- Hydraulic oil cooler
- Flashing light
- Platform work lights
- All motion alarm

Tyre Options ‡

- Grip lug foam-filled non marking tyres

‡ Standard lead times may be increased when optional equipment is added, consult factory

** Capacities, and machine weights may differ when options are added



‡ Standard lead times may be increased when optional equipment is added, consult factory
** Capacities, and machine weights may differ when options are added

Working At Height Limited

(Southern Office)
Amberley Court
Old Elstead Road
Milford
Surrey
GU8 5EB

Tel: 01483 415 410
Fax: 01483 417 719

Working At Height Limited

(Northern Office)
The Portergate
Ecclesall Road
Sheffield
South Yorkshire
S11 8NX

Tel: 0114 209 6206
Fax: 0114 209 6001

Suppliers of:

Powered Access Platforms
Aerial Work Platforms
Runabout Access Platforms
Scissor Lifts
Articulating Boom Access Platforms
Telescopic Boom Access Platforms
Material Lifts
Telehandlers
MEWPS Training